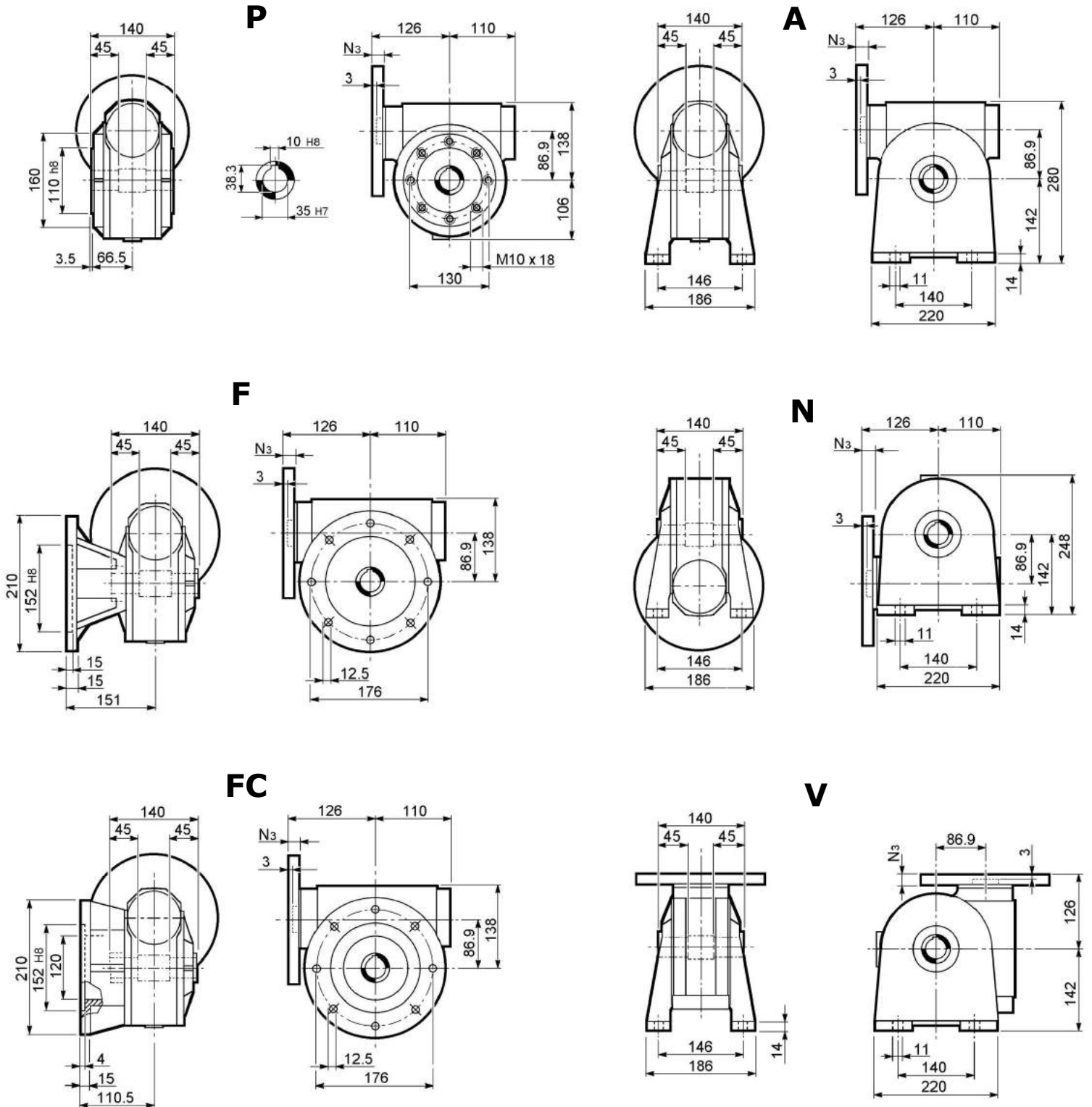
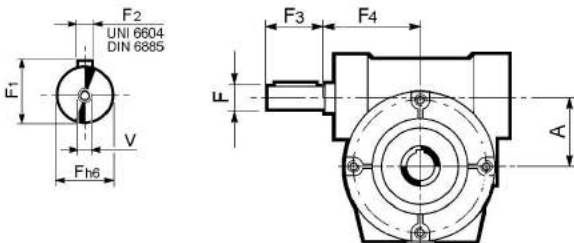


# SVF 86

Ratio	7	10	15	20	23	30	40	46	56	64	80	100
Nm (1400rpm)	245	270	290	280	280	330	320	310	275	275	255	230
R.D.	0.88	0.87	0.84	0.83	0.81	0.75	0.74	0.72	0.69	0.67	0.63	0.58



## HS Input shaft



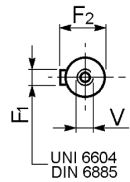
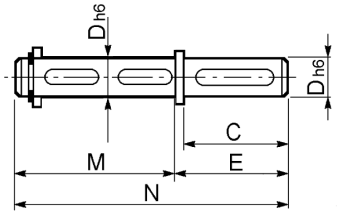
A	F	F1	F2	F3	F4	V
86.9	25	28	8	50	110	M8x20

The weight: 16.3 kg

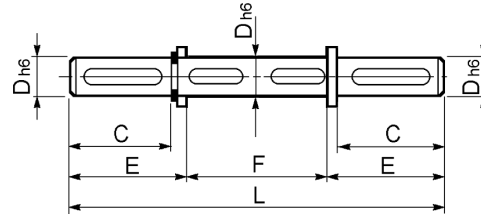
# SVF 86

## Output shaft

Single output shaft

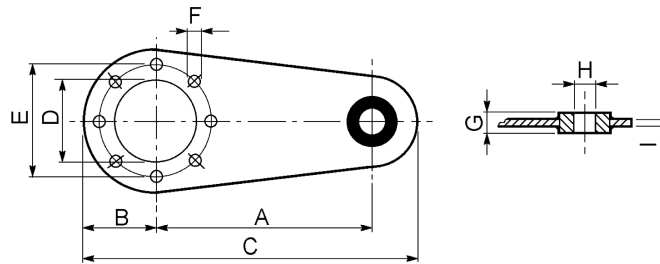


Double output shaft



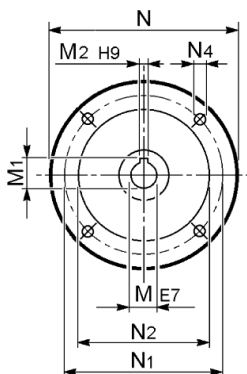
Typ	D	C	E	F	F1	F2	L	M	N	V
SVF 86	35	60	65	140	10	38	268	149	214	M10x25

## Torque arm



Typ	A	B	C	D	E	F	G	H	I
SVF 86	200	80	318	110	130	11	25	20	6

## P.A.M.



P.A.M.	M	N	N1	N2	M2	M1	N4
IEC 71B5	14	160	130	110	5	16,3	9
IEC 71B14	14	105	85	70	5	16,3	7
IEC 80B5	19	200	165	130	6	21,8	11
IEC 80B14	19	120	100	80	6	21,8	7
IEC 90B5	24	200	165	130	8	27,3	11
IEC 90B14	24	140	115	95	8	27,3	9
IEC 100/112B5	28	250	215	180	8	31,3	13,5
IEC 100/112B14	28	160	130	110	8	31,3	9