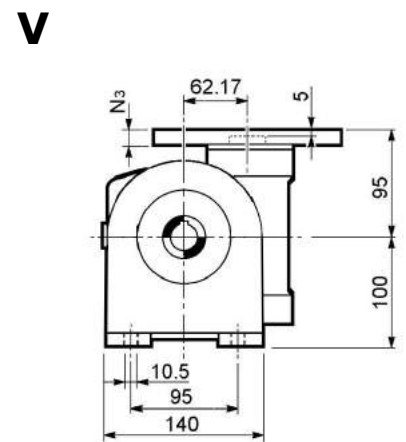
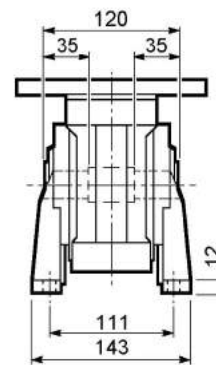
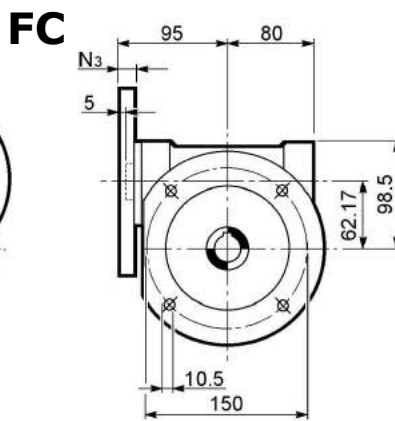
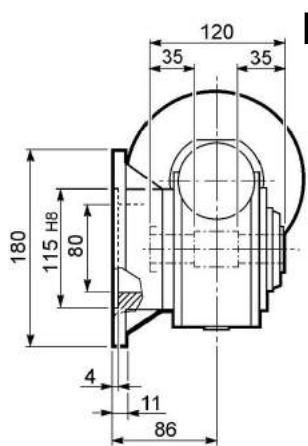
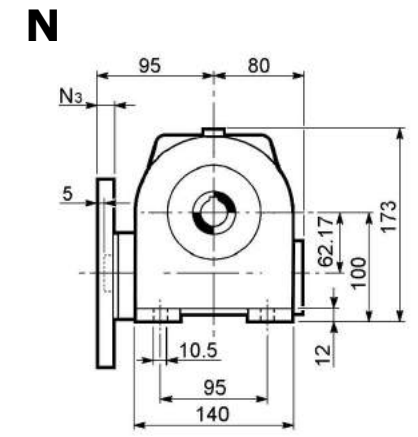
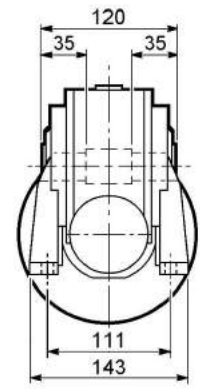
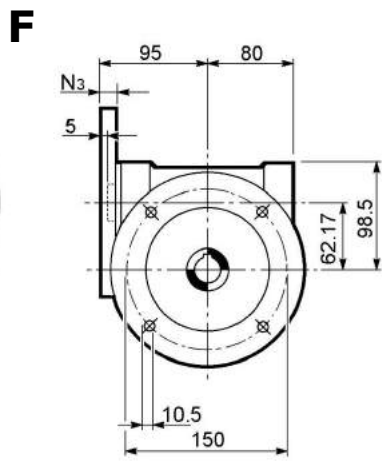
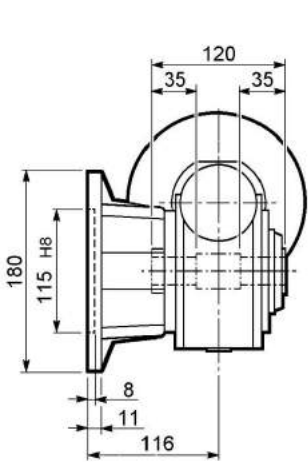
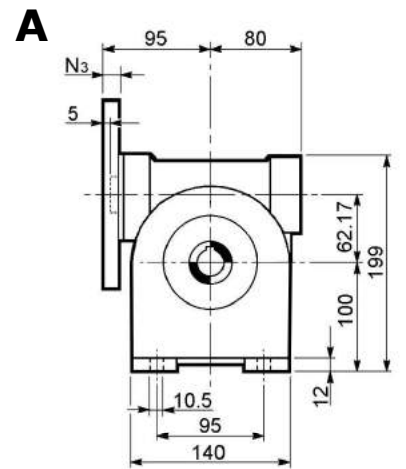
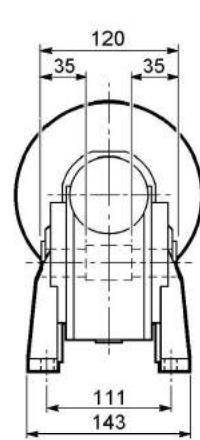
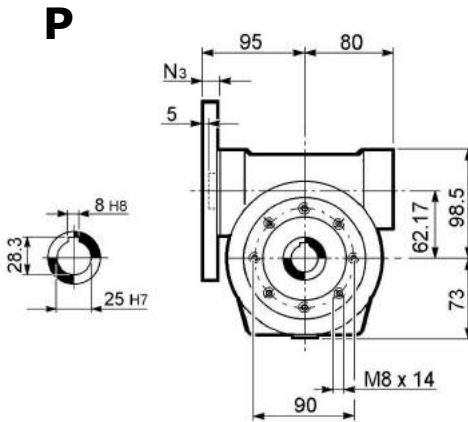
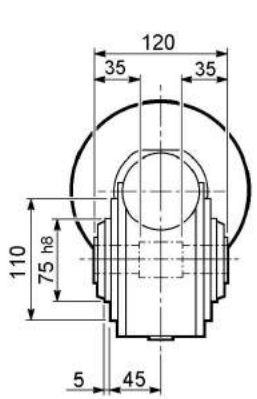
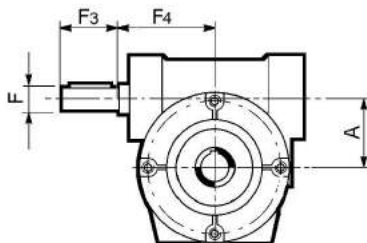
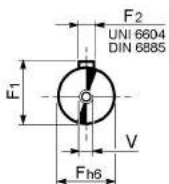


# SVF 63

Ratio	7	10	15	19	24	30	38	45	64	67	80	100
Nm (1400rpm)	119	128	131	131	135	139	140	129	118	151	113	113
R.D.	0.87	0.85	0.82	0.80	0.77	0.73	0.69	0.66	0.60	0.60	0.55	0.50



## HS Input shaft



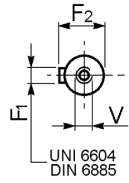
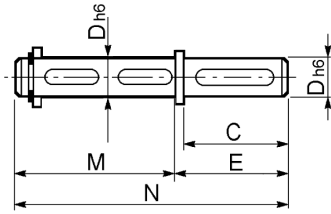
A	F	F1	F2	F3	F4	V
62.17	18	20.5	6	45	80	M6x16

The weight: 6.0 kg

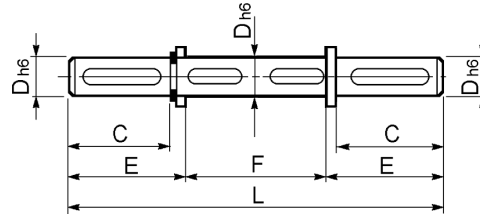
# SVF 63

## Output shaft

Single output shaft

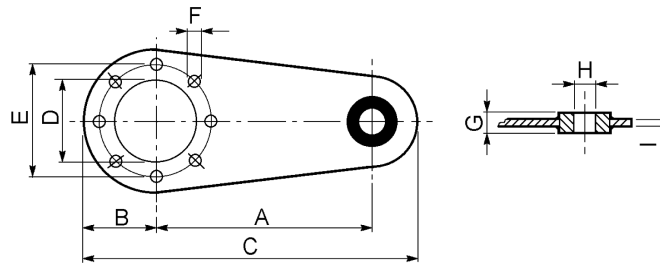


Double output shaft



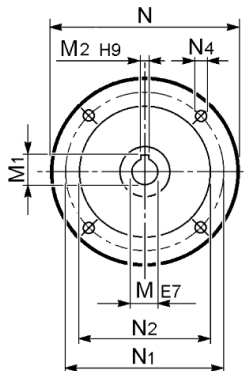
Typ	D	C	E	F	F1	F2	L	M	N	V
SVF 63	25	60	65	120	8	28	246.4	127	192	M8x20

## Torque arm



Typ	A	B	C	D	E	F	G	H	I
SVF 63	150	55	233	75	90	9	20	10	6

## P.A.M.



P.A.M.	M	N	N1	N2	M2	M1	N4
IEC 71B5	14	160	130	110	5	16,3	9
IEC 71B14	14	105	85	70	5	16,3	7
IEC 80B5	19	200	165	130	6	21,8	11
IEC 80B14	19	120	100	80	6	21,8	7
IEC 90B5	24	200	165	130	8	27,3	11
IEC 90B14	24	140	115	95	8	27,3	9