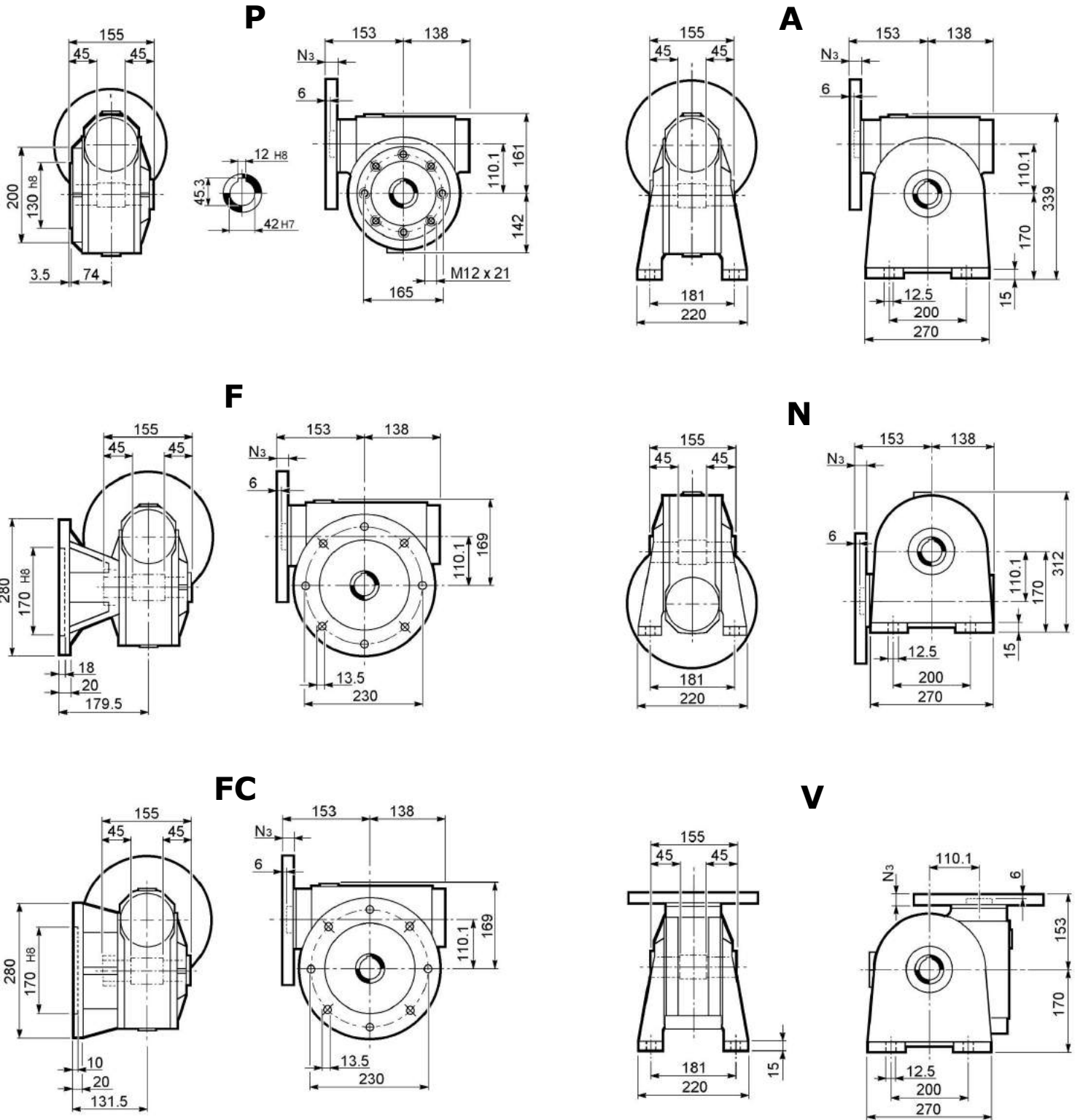
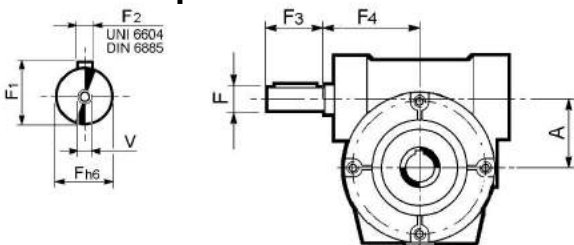


SVF 110

Ratio	7	10	16	20	23	30	38	45	53	64	84	99
Nm (1400rpm)	315	440	492	447	377	467	583	493	557	452	410	446
R.D.	0.88	0.86	0.82	0.82	0.80	0.76	0.75	0.73	0.70	0.69	0.65	0.60



HS Input shaft



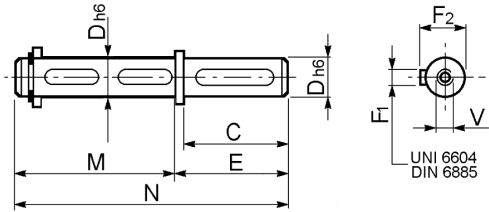
A	F	F1	F2	F3	F4	V
110.1	25	28	8	60	138	M8x20

The weight: 32.5 kg

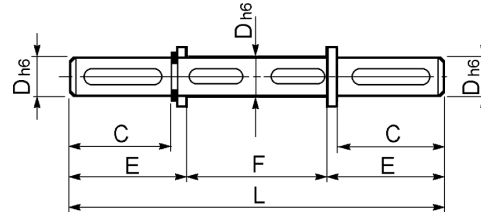
SVF 110

Output shaft

Single output shaft

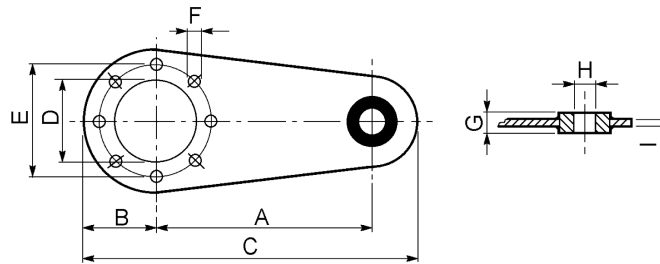


Double output shaft



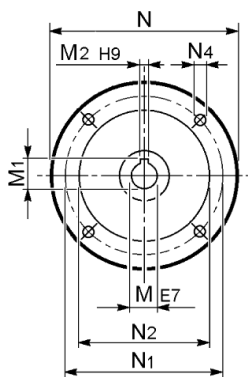
Typ	D	C	E	F	F1	F2	L	M	N	V
SVF 110	42	75	80	155	12	45	313.5	164	244	M12x32

Torque arm



Typ	A	B	C	D	E	F	G	H	I
SVF 110	250	100	388	130	165	13	25	20	6

P.A.M.



P.A.M.	M	N	N1	N2	M2	M1	N4
IEC 80B5	19	200	165	130	6	21,8	11
IEC 80B14	19	120	100	80	6	21,8	7
IEC 90B5	24	200	165	130	8	27,3	11
IEC 90B14	24	140	115	95	8	27,3	9
IEC 100/112B5	28	250	215	180	8	31,3	13,5
IEC 100/112B14	28	160	130	110	8	31,3	9
IEC 132B5	38	300	265	230	10	41,3	13,5
IEC 132B14	38	200	165	130	10	41,3	9