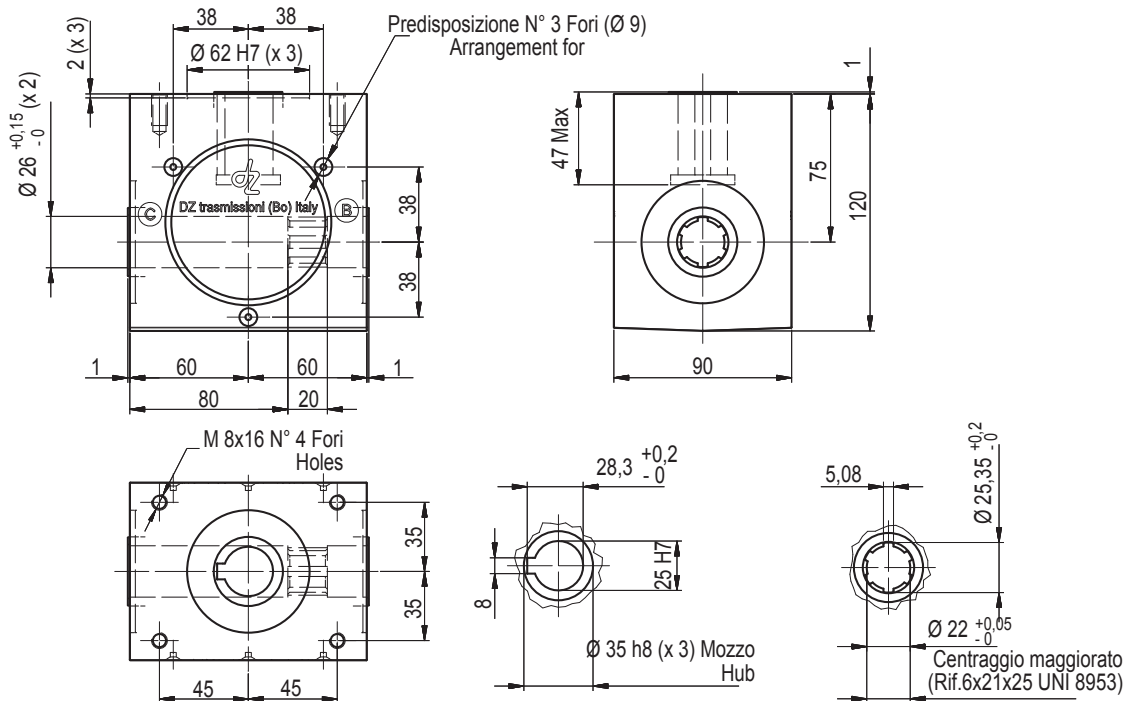
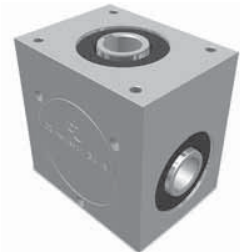


trasmissioni



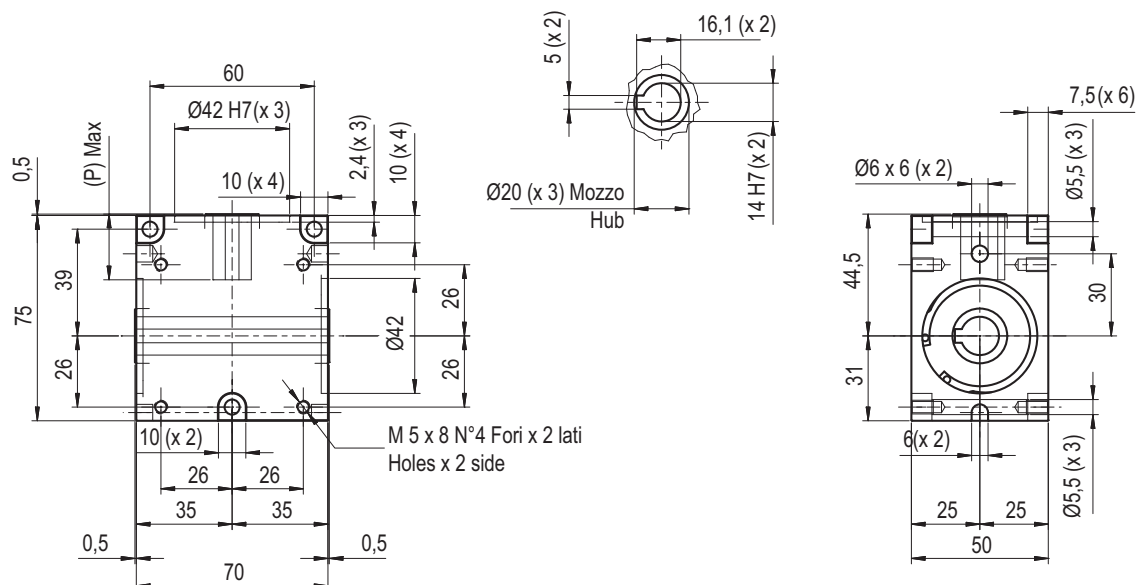
**Serie / Series
Speciale / Special**

MOD.	DZ		Rapp.	Entrata	Uscita	Modello	Peso
			Ratio	In	Out	Model	Weight
SPECIALE SPECIAL			1/1	A	B - C	DZ 512 - 31	Kg 4.1

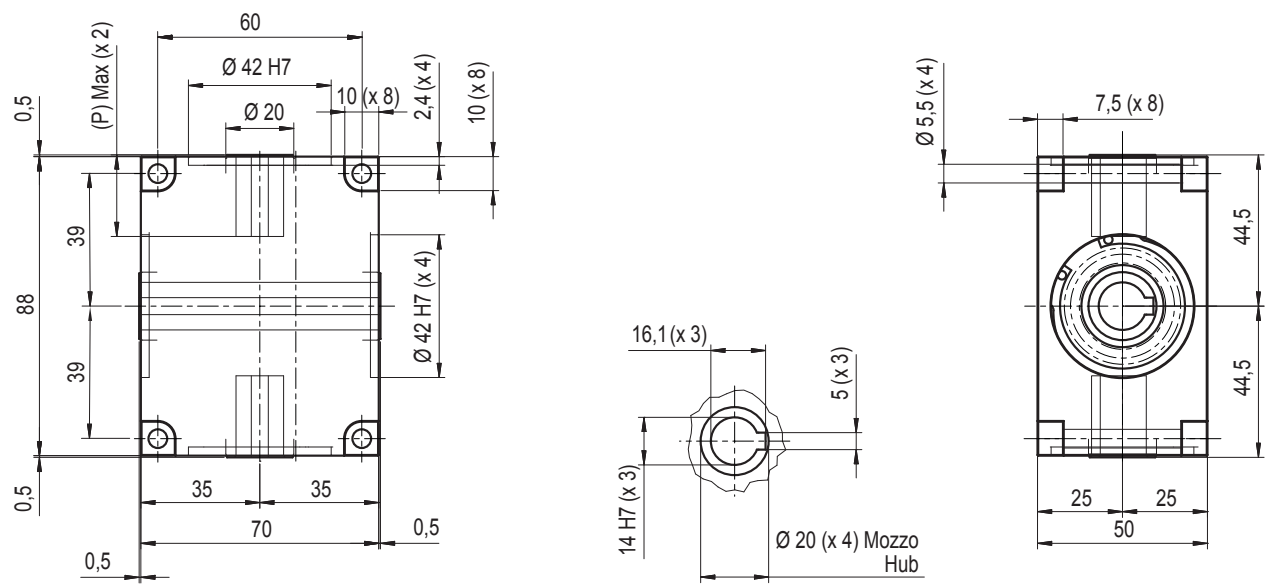


MOD.	DZ		Rapp.	Entrata	Uscita	P	Modello	Peso
			Ratio	In	Out		Model	Weight
SPECIALE SPECIAL			1/1	A	B - C	24	DZ 505 - 60	Kg 0.7
			1/1,5	A	B - C	16	DZ 505 - 51*	

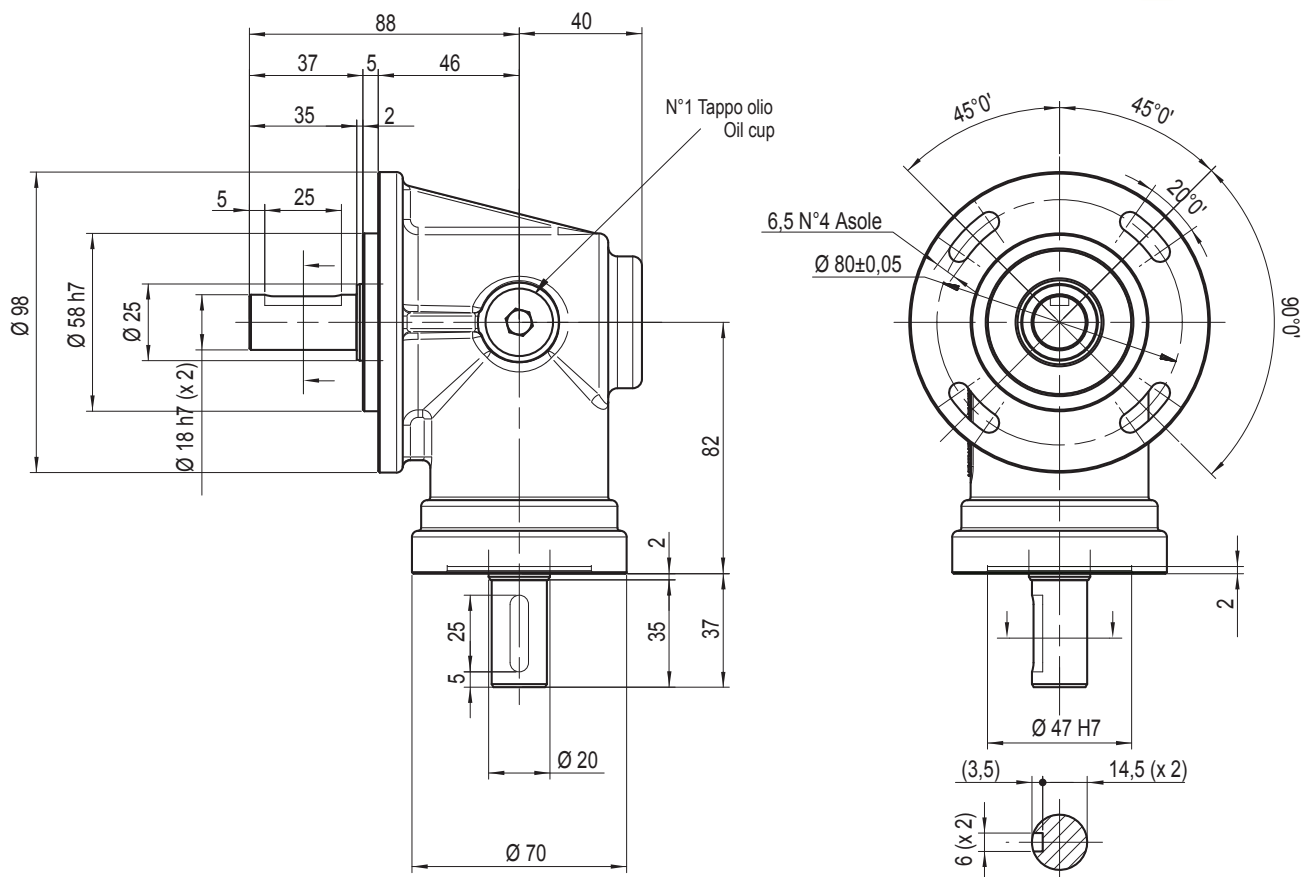
* Modello su ordinazione / Model to order



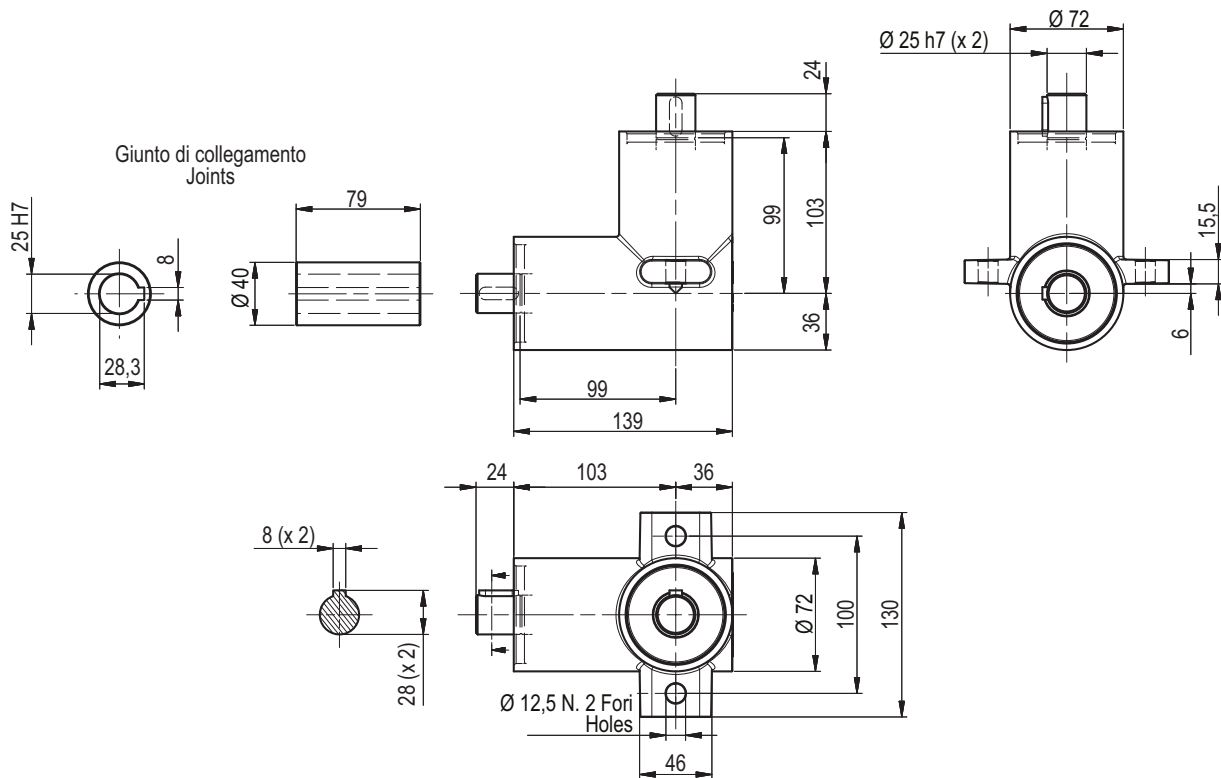
MOD.	DZ		Rapp.	Entrata	Uscita	P	Modello	Peso
			Ratio	In	Out		Model	Weight
SPECIALE SPECIAL			1/1	A	B - C - D	24	DZ 505 - 70	Kg 1
			1/1,5	A	B - C - D	16	DZ 505 - 71*	
* Modello su ordinazione / Model to order								



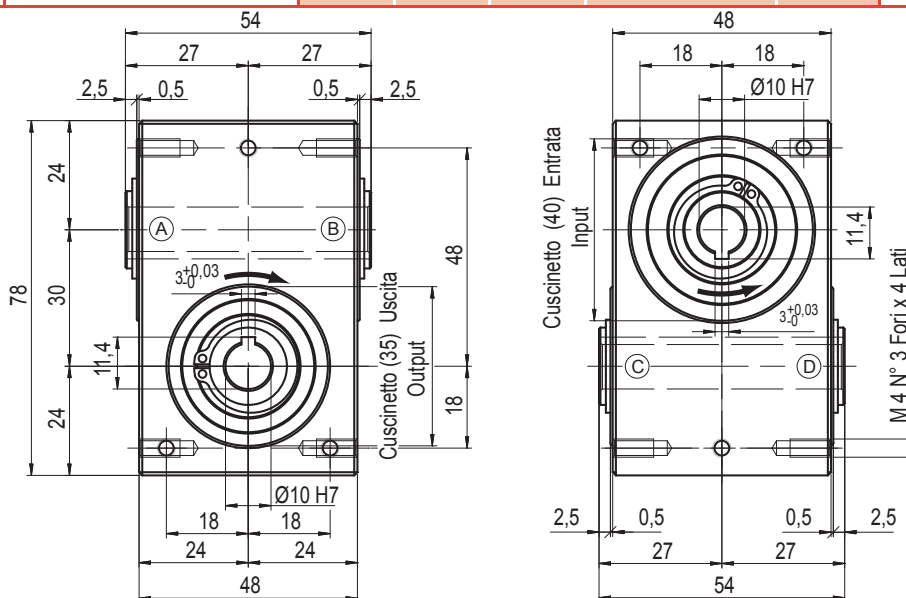
MOD.	DZ		Rapp.	Entrata	Uscita	Modello	Peso
			Ratio	In	Out	Model	Weight
SPECIALE SPECIAL			1/1	A	B	DZ 604 - 50	1,7



MOD.	DZ		Rapp.	Entrata	Uscita	Modello	Peso
			Ratio	In	Out	Model	Weight
SPECIALE SPECIAL			1/1	A	B	DZ 512 - 21	Kg 4.2

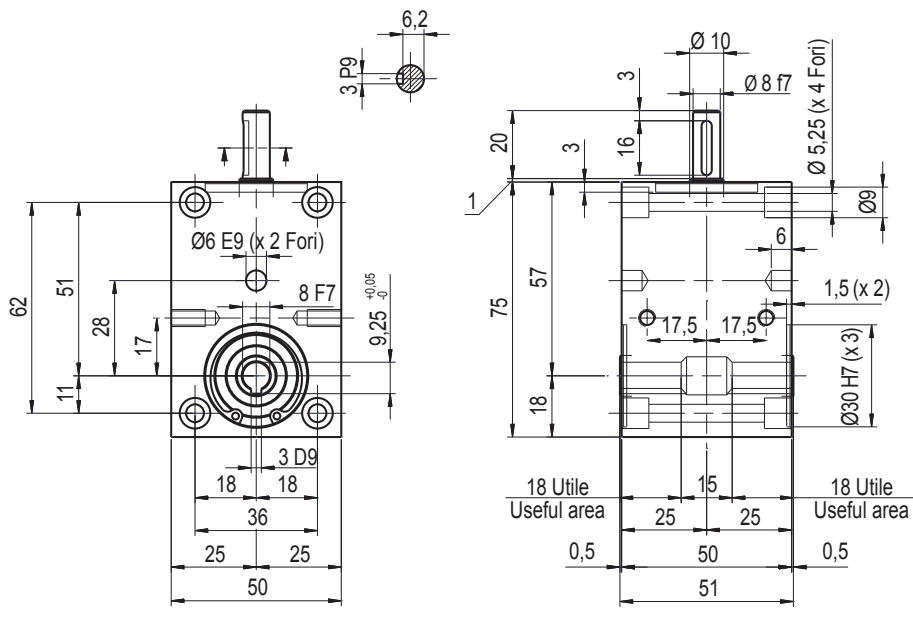


RINVIO ORTOGONALE A INGRANAGGI CILINDRICI - ANGULAR IDLER WITH CYLINDRICAL GEARS							
MOD.	DZ		Rapp.	Entrata	Uscita	Modello	Peso
			Ratio	In	Out	Model	Weight
SPECIALE SPECIAL			1/1	A - B	C - D	DZ 150 - 01	Kg 0,7





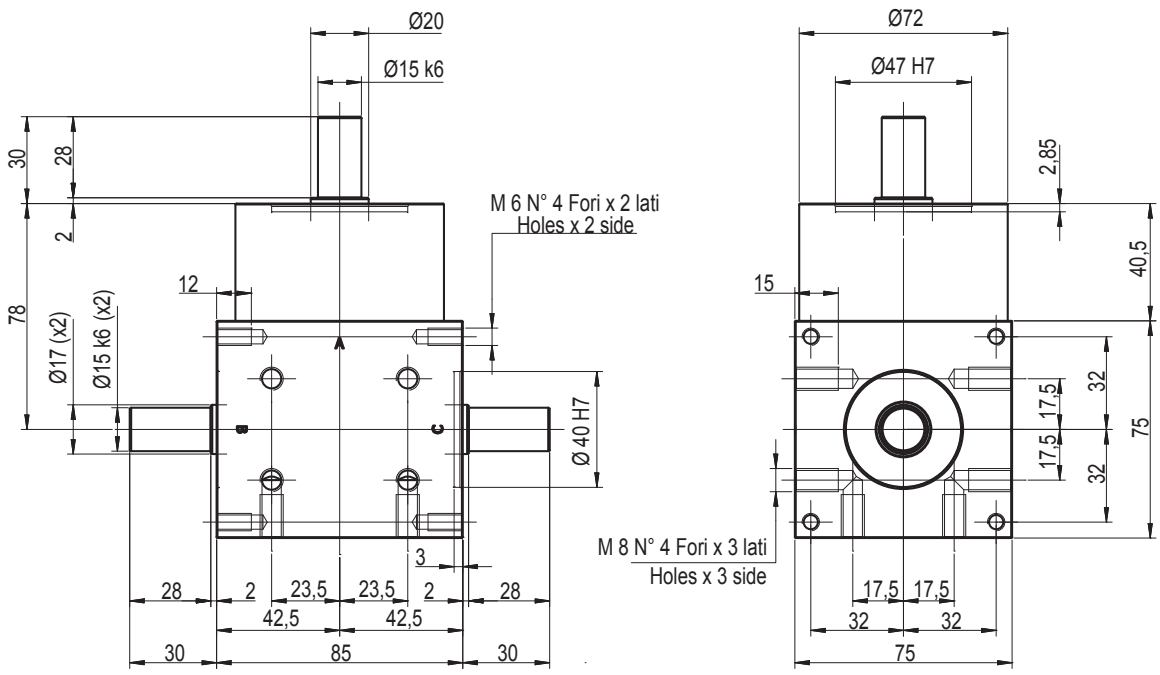
MOD.	DZ		Rapp.	Entrata	Uscita	Modello	Peso
			Ratio	In	Out	Model	Weight
SPECIALE SPECIAL			1/1	A	B - C	DZ 600 - 61	Kg 1



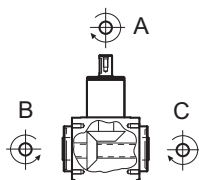
MOD.	DZ		Modello	Versione		Rapp.	Peso	
			Model	Version		Ratio	Weight	
SPECIALE SPECIAL			DZ 201 - 01	AB	AC	ABC	1/1	Kg 2,4
			Altri rapporti su richiesta					
			Other ratios are available upon request					

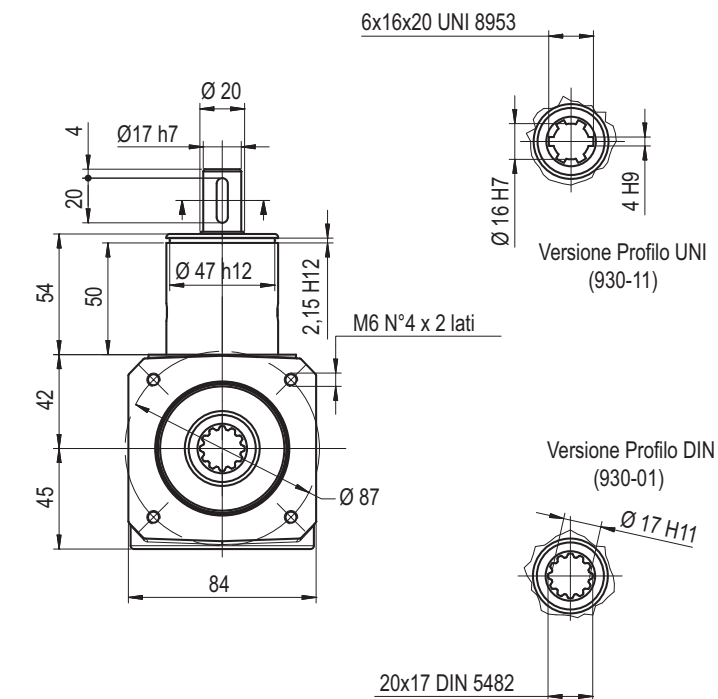
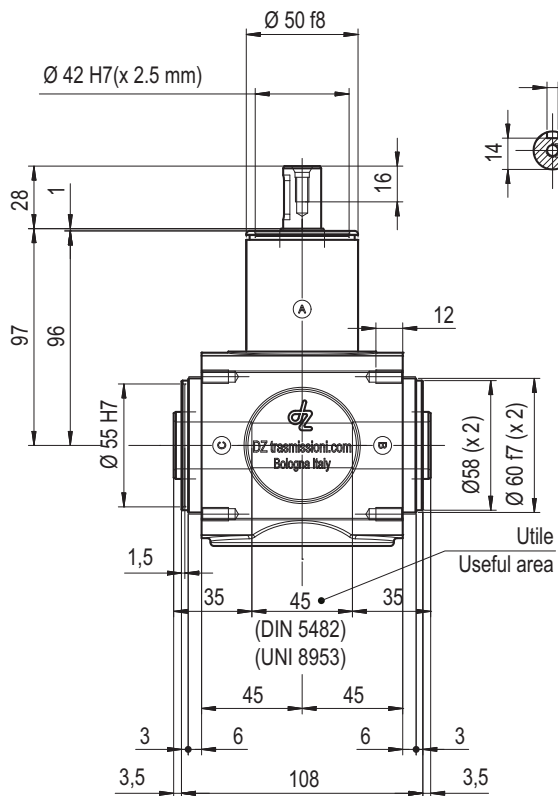


Per ordinativi indicare: modello - versione (alberi presenti) - rapporto / In case of order please state: model - version (shafts) - ratio





MOD.	DZ	Rapp.	Entrata	Uscita	Modello	Peso
SPECIALE SPECIAL		Ratio	In	Out	Model	Weight
		1/1	A	B - C	DZ 930 - 01 (DIN)	Kg 4.2
		1/1	A	B - C	DZ 930 - 11 (UNI)	

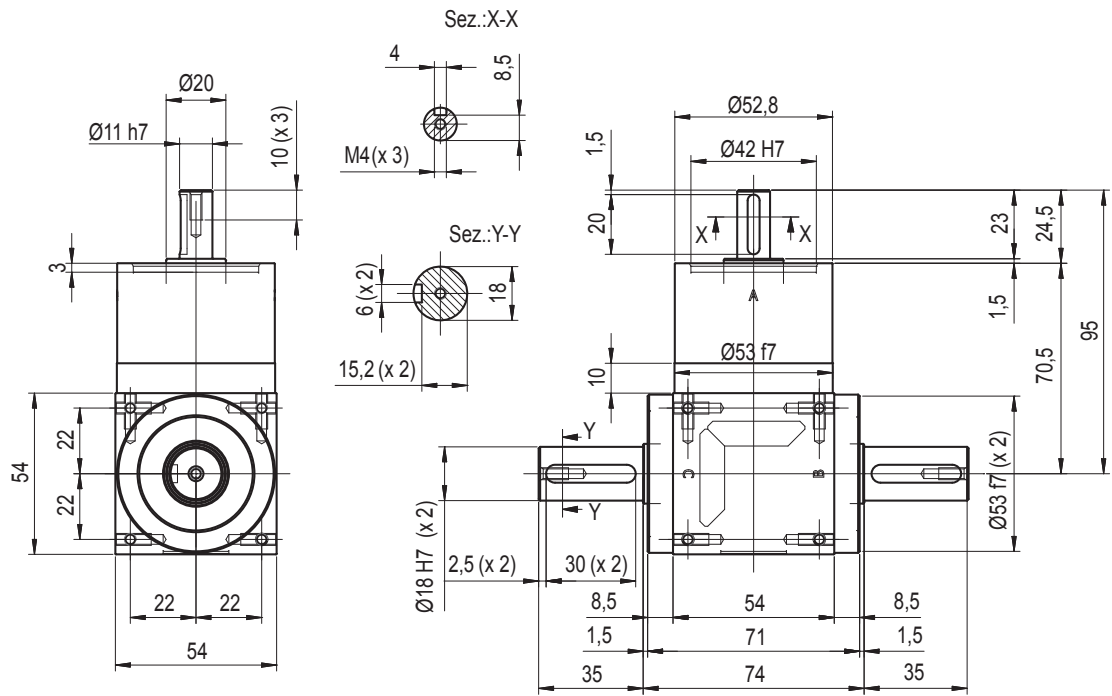




MOD.	DZ		Modello	Versione			Rapp.	Peso
			Model	Version			Ratio	Weight
SPECIALE SPECIAL			DZ 200 – 21	AB	AC	ABC	1/1	Kg 1,1
			Altri rapporti su richiesta Other ratios are available upon request					



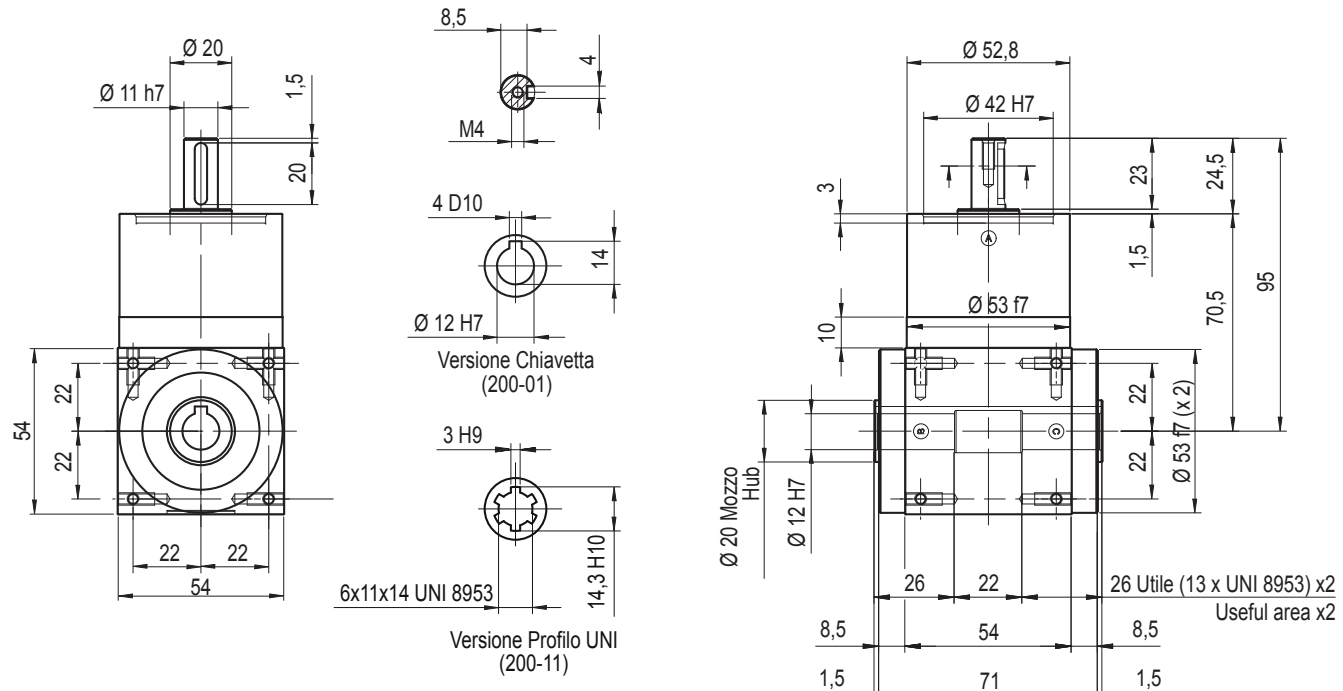
Per ordinativi indicare: modello - versione (alberi presenti) - rapporto / In case of order please state: model - version (shafts) - ratio

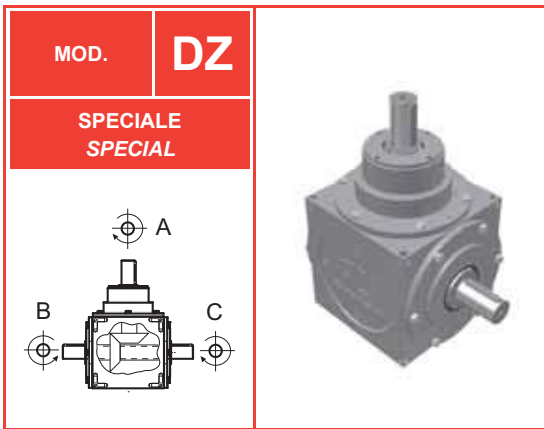


MOD.	DZ		Modello	Entrata	Uscita	Rapp.	Peso
			Model	In	Out	Ratio	Weight
SPECIALE SPECIAL			DZ 200 – 01 (chiavetta)	A	B - C	1/1	Kg 1
			DZ 200 – 11 (UNI)	A	B - C	1/1	
			Altri rapporti su richiesta Other ratios are available upon request				



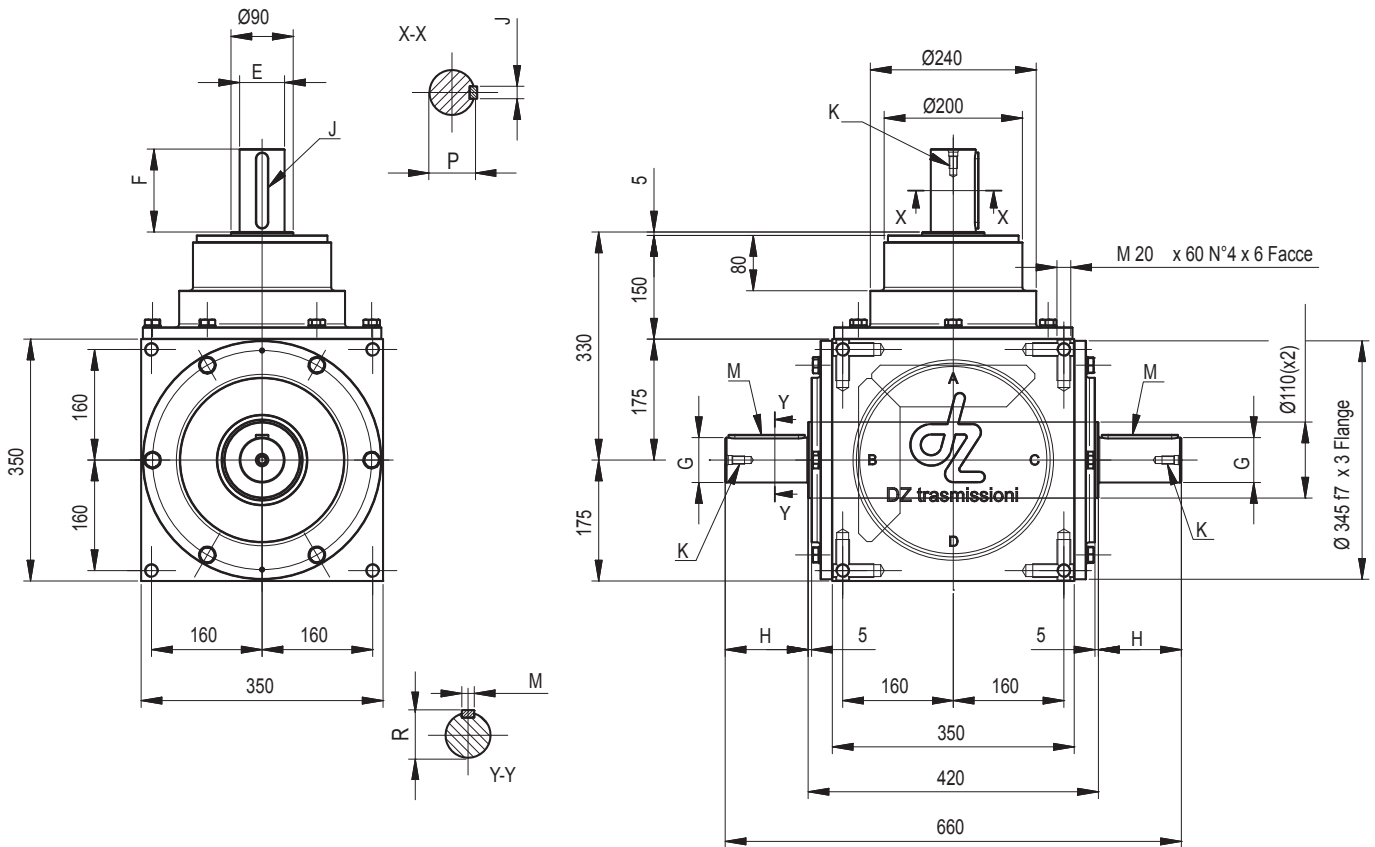
Per ordinativi indicare: modello - versione (alberi presenti) - rapporto / In case of order please state: model - version (shafts) - ratio

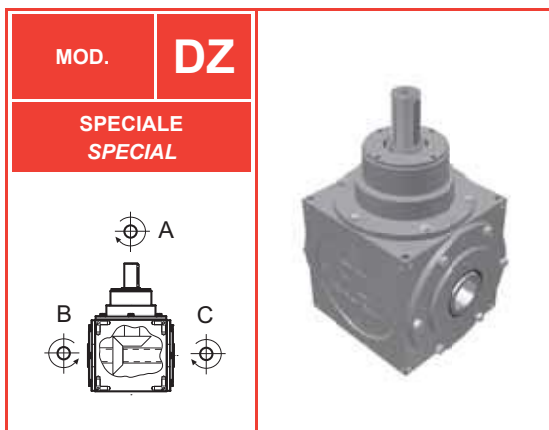




Modello	Versioni			Rapp.	E	F	G	H	J	M	K	P	R	Peso
Model	Version			Ratio										Weight
DZ 270 - 51	A-B	A-C	A-B-C	1/1	65	120	65	120	18x11x110	18x11x110	M12x25	69	69	Kg 212-221
DZ 270 - 61	A-B	A-C	A-B-C	1/1	65	120	85	170	18x11x110	22x14x160	M12x25	69	90	
DZ 270 - 71	A-B	A-C	A-B-C	1/1	85	170	85	170	22x14x160	22x14x160	M12x25	90	90	
Altri rapporti su richiesta / Other ratios ara available upon request														

Per ordinativi indicare: modello - versione (alberi presenti) - rapporto / In case of order please state: model - version (shafts) - ratio





Modello	Rapp.	E	F	G	H	J	M	K	P	R	Peso
Model	Ratio										Weight
DZ 270 - 01	1/1	65	120	80	65	18 x 11 x 110	22	M12 x 25	65	85,5	Kg 204-207
DZ 270 - 21	1/1	85	170	80	65	22 x 14 x 160	22	M12 x 25	90	85,5	
DZ 270 - 31	1/1	65	120	UNI 8953 10 x 72 x 82	50	18 x 11 x 110	-	M12 x 25	65		

Altri rapporti su richiesta / Other ratios ara available upon request

Per ordinativi indicare: modello - versione (alberi presenti) - rapporto / In case of order please state: model - version (shafts) - ratio

