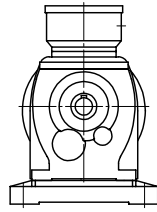
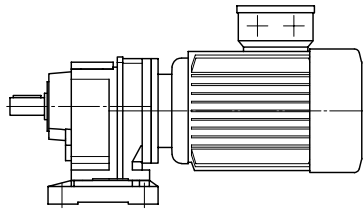


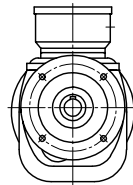
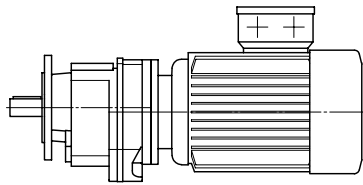
Helical Geared Motors ZG

KEB



Foot mounted version B3

Example: ZG22 DL100LX4, Foot mounted version B3



Flange mounted version B5

Example: ZG13 DL80G4, Flange mounted version B5

Helical Geared Motors ZG



kW	Type	1/min *)	kg B3	kg B5
0.12	ZG23 DL63K4	10-12.5	15	15
	ZG13 DL63K4	16	11	11
	ZG03 DL63K4	20-25-31.5-40-50-63	10	10
	ZG02 DL63K4	80-100-125-160-200-250-315-400	10	10
0.18	ZG23 DL63G4	10-12.5	15	15
	ZG13 DL63G4	16-20-25	11	11
	ZG03 DL63G4	31.5-40-50-63	10	10
	ZG02 DL63G4	80-100-125-160-200-250-315-400	10	10
0.25	ZG23 DL71K4	12.5-16	15	15
	ZG13 DL71K4	20-25-31.5-40-50	11	11
	ZG03 DL71K4	63	10	10
	ZG02 DL71K4	80-100-125-160-200-250-315-400	10	10
0.37	ZG23 DL71G4	16-20-25	16	16
	ZG13 DL71G4	31.5-40-50	12	12
	ZG03 DL71G4	63	11	11
	ZG02 DL71G4	80-100-125-160-200-250-315-400	10	10
0.55	ZG23 DL80K4	20-25-31.5-40-50	21	21
	ZG13 DL80K4	63	17	17
	ZG12 DL80K4	80	16	16
	ZG02 DL80K4	100-125-160-200-250-315-400	15	15
0.75	ZG23 DL80G4	31.5-40-50	21	21
	ZG13 DL80G4	63	18	18
	ZG12 DL80G4	80-100	17	17
	ZG02 DL80G4	125-160-200-250-315-400	16	16
1.1	ZG23 DL90S4	63	24	24
	ZG22 DL90S4	80	23	23
	ZG12 DL90S4	100-125-160-200-250-315-400	20	20
1.5	ZG23 DL90L4	63	27	27
	ZG22 DL90L4	80-100	26	26
	ZG12 DL90L4	125-160-200-250-315-400	23	23
2.2	ZG22 DL100L4	100-125-160-200-250-315-400	31	31
3	ZG22 DL100LX4	125-160-200-250-315-400	38	38

i	M [Nm] cG=1	n2 *) [1/min] n1=1400	Pmax [kW]
---	----------------	-----------------------------	-----------

ZG03

72.52	60	20	0.12
52.38	60	25	0.17
45.19	60	31.5	0.19
34.25	60	40	0.26
29.57	60	50	0.30
22.15	60	63	0.40

ZG02

16.97	60	80	0.52
12.26	60	100	0.72
10.58	60	125	0.75
9.18	58	160	0.75
7.02	51	200	0.75
5.21	43	250	0.75
4.52	40	315	0.75
3.46	35	400	0.75

ZG13

83.91	117	16	0.20
72.69	117	20	0.24
55.63	117	25	0.31
43.09	117	31.5	0.40
36.98	117	40	0.46
27.95	117	50	0.61
21.59	117	63	0.79

*) Nenndrehzahl

i	M [Nm] cG=1	n2 *) [1/min] n1=1400	Pmax [kW]
---	----------------	-----------------------------	-----------

ZG12

18.39	117	80	0.93
14.16	117	100	1.2
11.19	117	125	1.5
8.77	106	160	1.5
7.06	97	200	1.5
5.51	87	250	1.5
4.41	79	315	1.5
3.37	69	400	1.5

ZG23

153.41	235	10	0.22
113.42	235	12.5	0.30
87.34	235	16	0.39
69.48	235	20	0.49
53.51	235	25	0.64
47.44	235	31.5	0.72
36.59	235	40	0.93
28.90	235	50	1.2
22.65	230	63	1.5

ZG22

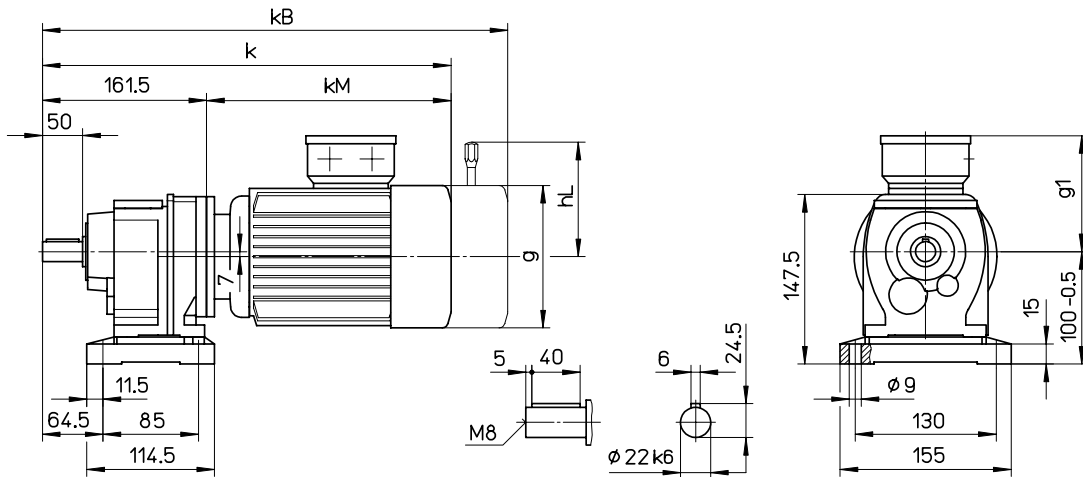
17.00	235	80	2.0
13.60	235	100	2.5
10.90	230	125	3.0
8.64	215	160	3.0
7.52	235	200	3.0
6.31	164	250	3.0
5.06	167	315	3.0
4.01	142	400	3.0

Helical Geared Motors ZG



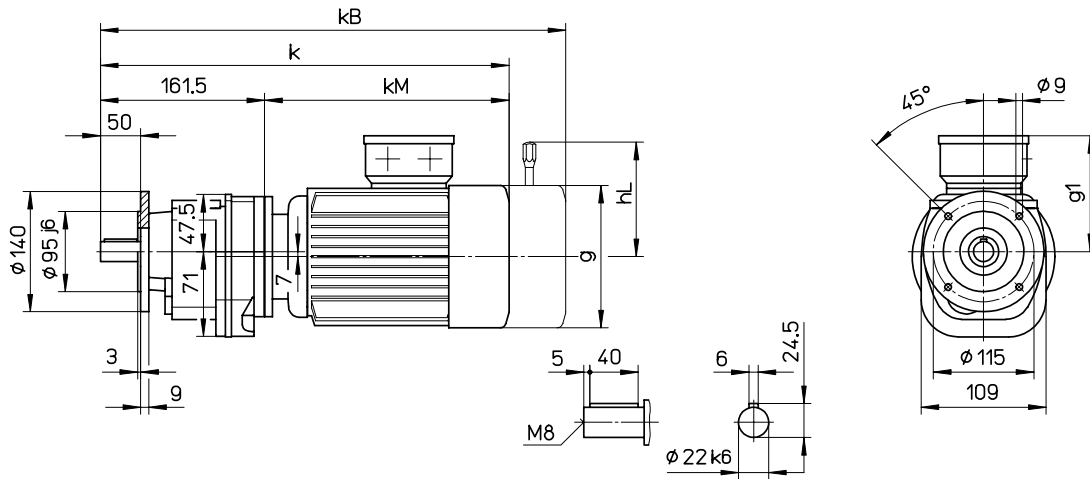
ZG02 / ZG03

Foot mounted version



ZG02 / ZG03

B5 Flange mounted version



	k	kB	kM	g	g1	hL
ZG0_DL63/71	363	417	201	126	113	106
ZG0_DL80	406	463	244	142	121	114

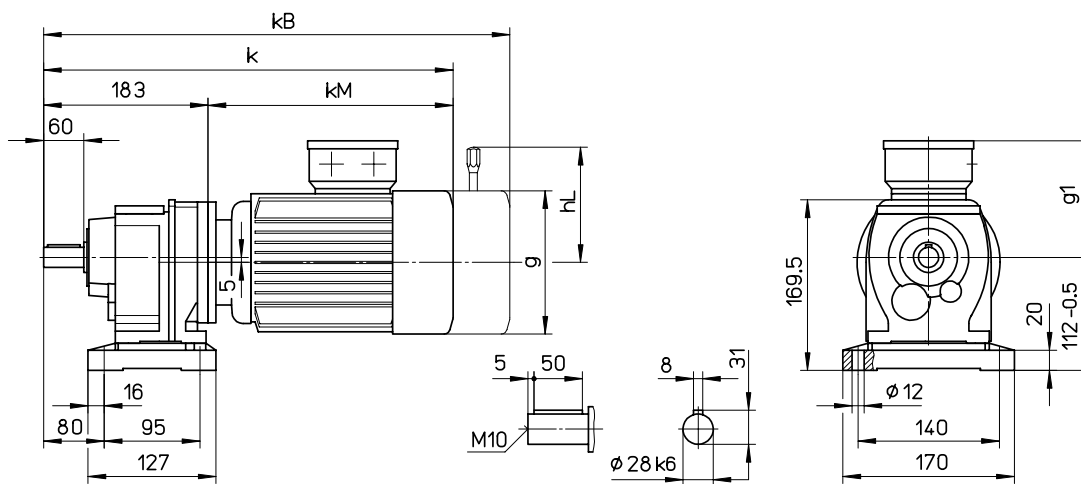
Dimensions kB and hL apply to geared motors with brake.

Helical Geared Motors ZG



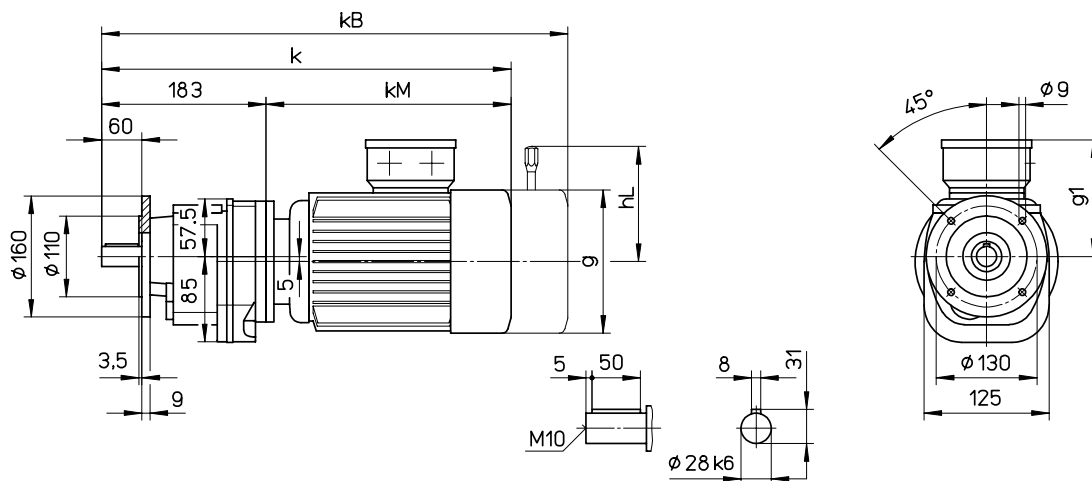
ZG12 / ZG13

Foot mounted version



ZG12 / ZG13

B5 Flange mounted version



	k	kB	kM	g	g1	hL
ZG1_DL63/71	383	437	200	126	113	106
ZG1_DL80	426	483	243	142	121	114
ZG1_DL90	467	532	284	160	130	128

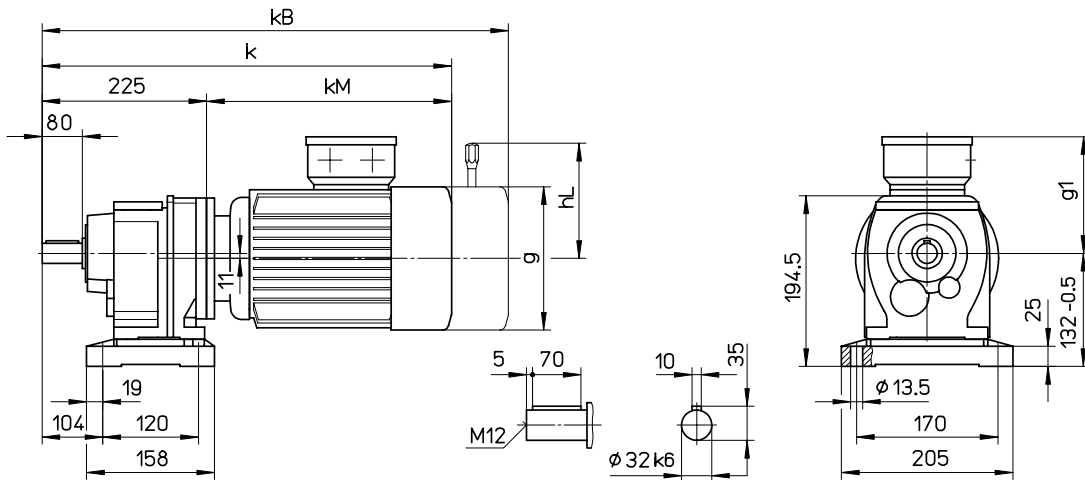
Dimensions kB and hL apply to geared motors with brake.

Helical Geared Motors ZG



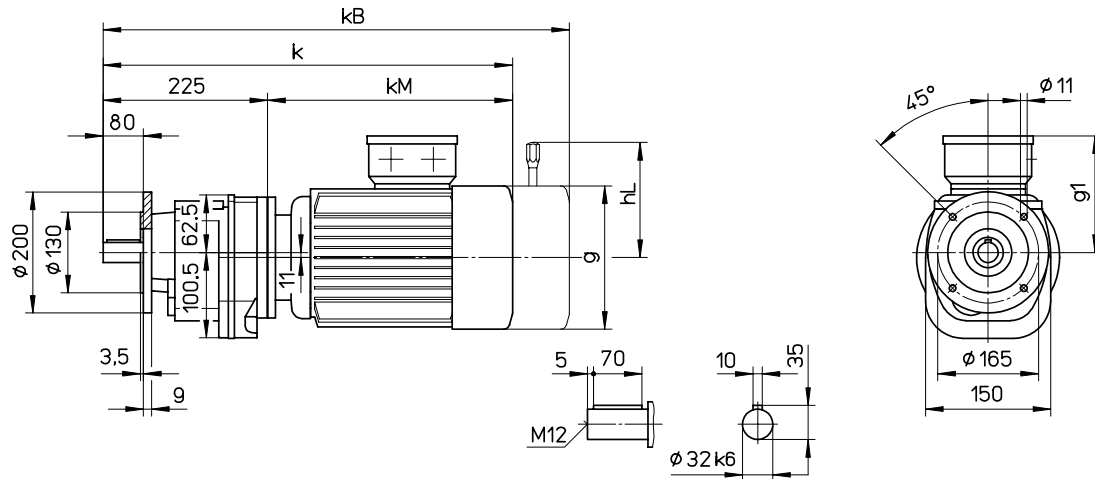
ZG22 / ZG23

Foot mounted version



ZG22 / ZG23

B5 Flange mounted version



	k	kB	kM	g	g1	hL
ZG2_DL63/71	422	476	197	126	113	106
ZG2_DL80	465	522	240	142	121	114
ZG2_DL90	509	574	284	160	130	128
ZG2_DL100	562	633	337	180	141	168

Dimensions kB and hL apply to geared motors with brake.