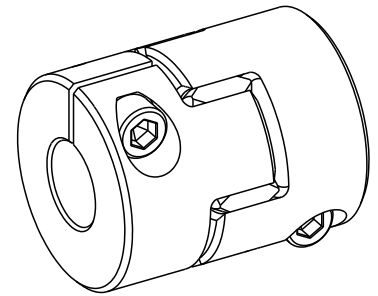
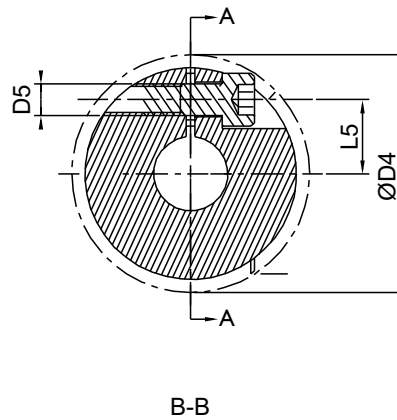
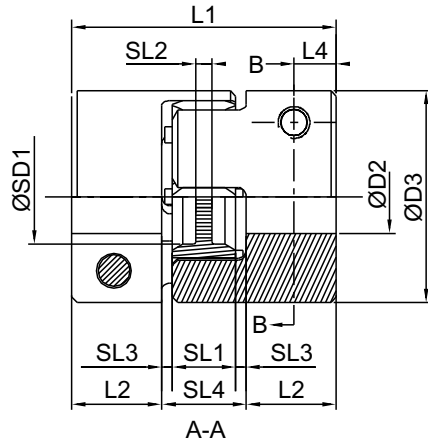
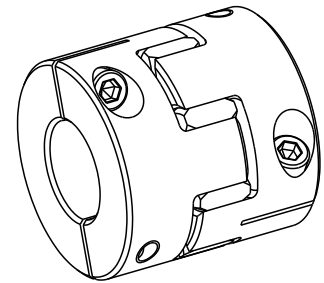
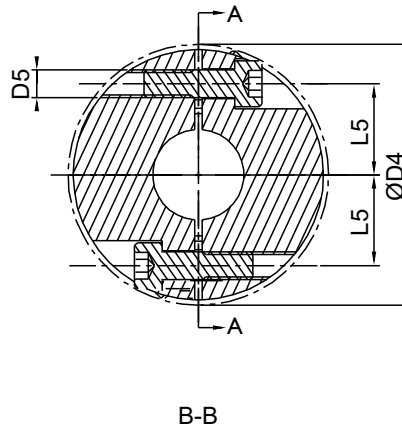
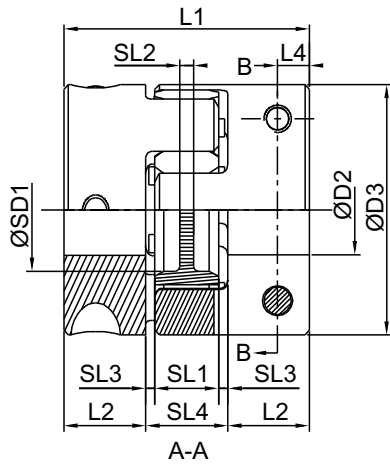


C / CK Type Hub

C Type, Size 07-19 (Size 08,13,16 Hollow)



C Type, Size 24-38



Hub Material - Aluminum.

Size	Max. Speed [rpm]	D2 max	D3	L1	L2	SD1	SL1	SL2	SL3	SL4	Screw Tightening Torque T_A [Nm]	D4	D5 ⁽²⁾	L4	L5	Inertia ⁽³⁾ J [kg.cm ²]
07	27000	7	14	18	5	—	6	—	1	8	0.37	16.5	M2	2.5	5	0.001
08	23800	8	15	20	7	6.2	5	1.5	0.5	6	0.52	17.2	M2	3	5.5	0.001
09	19000	9	20	24	7	7.2	8	1.5	1	10	0.76	21.3	M2.5	3.5	6.7	0.004
12	15200	12	25	26	7	8.5	10	3.5	1	12	1.34	26.2	M3	3.5	8.3	0.011
13	12700	12.7	25	26	8	10	8	1.5	1	10	1.9	25.7	M3	4	8	0.011
14	12700	16	30	32	9.5	8.3	10	2	1.5	13	2.9	31.2	M4	5	10	0.025
16	12000	16	30	32	10.3	14	9.4	2	1	11.4	4.1	32.6	M4	5	10.5	0.027
19	9550	24	40	50	17	18	12	3	2	16	10	45	M6	8	14	0.138
24	10400	32	55	54	18	27	14	3	2	18	10	57.5	M6	7	20	0.491
28	8800	35	65	62	21	30	15	4	2.5	20	25	68.6	M8	9	23.8	1.173
38	7150	45	80	76	26	38	18	4	3	24	49	84.1	M10	11	29.5	3.268

(1) Elastomers with different hardnesses can be found on page 6.

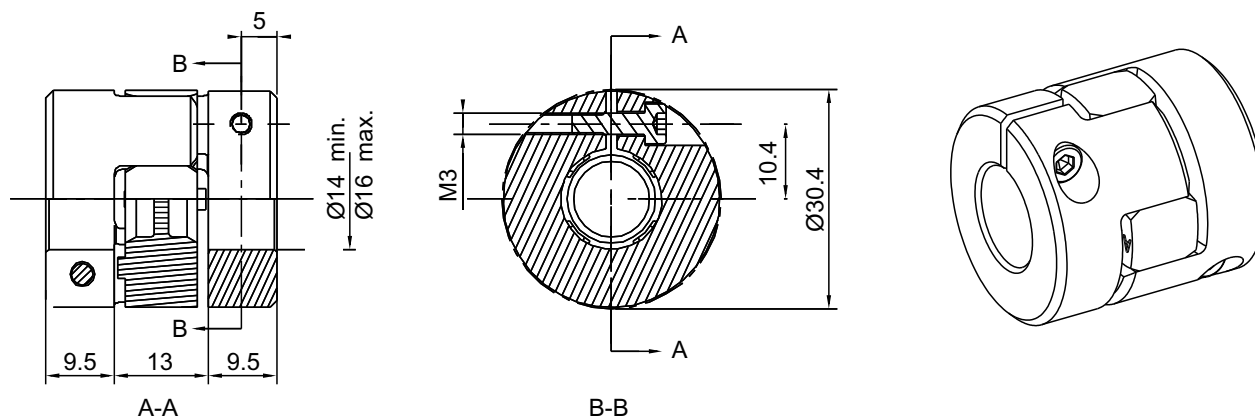
(2) Clamping screws DIN EN ISO 4762.

(3) The moment of inertia of the maximum bore diameter of a single hub.

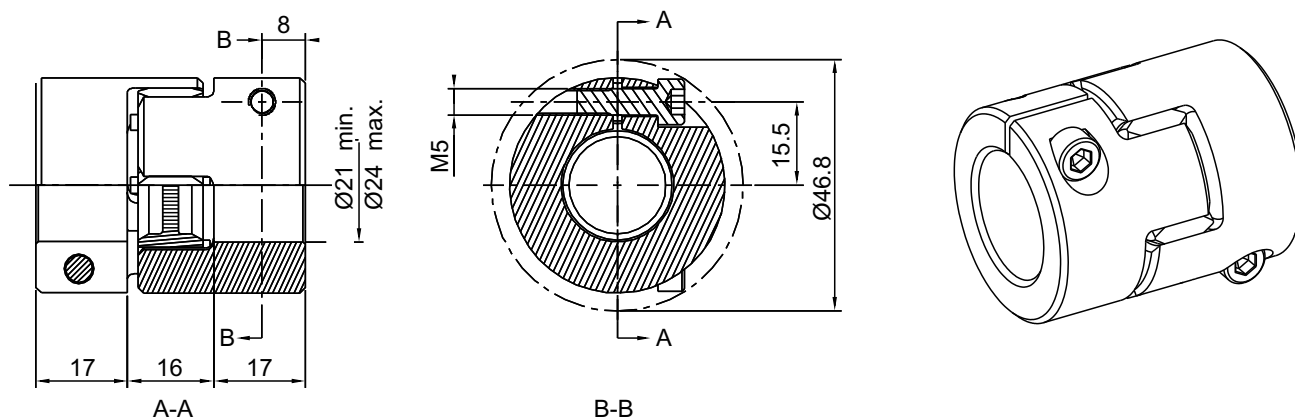
(4) Finished bore diameter tolerance is H7, hole diameter $>\varnothing 6$ keyway, according to DIN 6885/1, dimensional tolerance is JS9. Please refer to page 6 for keyway dimensions corresponding to each bore diameter.

C / CK Type Hub

C Type, Size 14, Bore $\text{Ø}14\text{-}\text{Ø}16$, M3 Clamping Screws
 $L9=10.4 / D4=30.4 / T_A=1.34\text{Nm}$



C Type, Size 19, Bore $\text{Ø}21\text{-}\text{Ø}24$, M5 Clamping Screws
 $L9=15.5 / D4=46.8 / T_A=6\text{Nm}$



Spec 07-19 Bore and Transmittable Torques T_R [Nm]																	
Size	Ø3	Ø4	Ø5	Ø6	Ø7	Ø8	Ø9	Ø10	Ø11	Ø12	Ø14	Ø15	Ø16	Ø18	Ø19	Ø20	Ø24
07	1.3	1.4	1.5	1.6	1.7												
08	2.0	2.2	2.3	2.5	2.6	2.7											
09		2.8	3.0	3.2	3.3	3.5	3.6										
12		4.8	5.2	5.4	5.6	5.8	6.1	6.3	6.5	6.8							
13		6.4	6.7	7.0	7.3	7.6	7.9	8.2	8.5	8.9							
14			10.2	10.6	11.1	11.5	11.8	12.3	12.7	13.1	8.2	8.5	8.7				
16			14.5	15.1	15.6	16.2	16.8	17.3	17.8	18.4	19.5	20.1	20.6				
19						36.0	36.8	37.8	38.8	39.7	41.7	42.7	43.7	45.7	46.7	47.7	37.2

Spec 24-38 Bore and Transmittable Torques T_R [Nm]																			
Size	Ø10	Ø11	Ø12	Ø14	Ø15	Ø16	Ø18	Ø19	Ø20	Ø24	Ø25	Ø28	Ø30	Ø32	Ø35	Ø38	Ø40	Ø42	Ø45
24	25	28	30	35	38	40	46	48	51	61	63	71	76	81					
28				64	68	73	82	87	91	110	114	128	137	146	160				
38					105	112	126	133	140	167	174	195	209	223	244	265	279	293	314