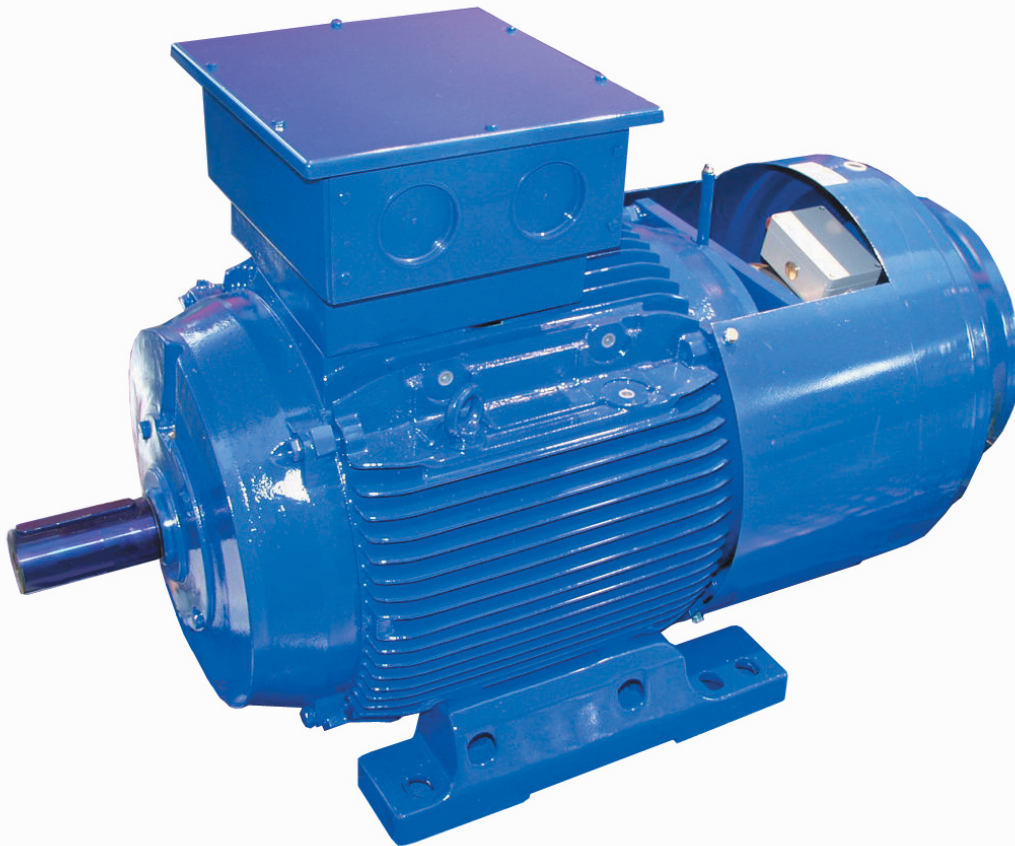


FM-SERIES

Asynchronous brake motors



FM series brake motors are externally ventilated and completely closed.

FM motors are available from frame 225 to 315; all the components of the motor parts are in cast iron and the motors are supplied painted blue RAL5010.

The brakes mounted are DC and made to ensure a very long life. The type of brake mounted can be changed on request (for further information see tech. tabs).

The very strong structure of FM series brake motors ensures high reliability for high power applications.

The brake current supply is separated from the motor supply as standard.

Features

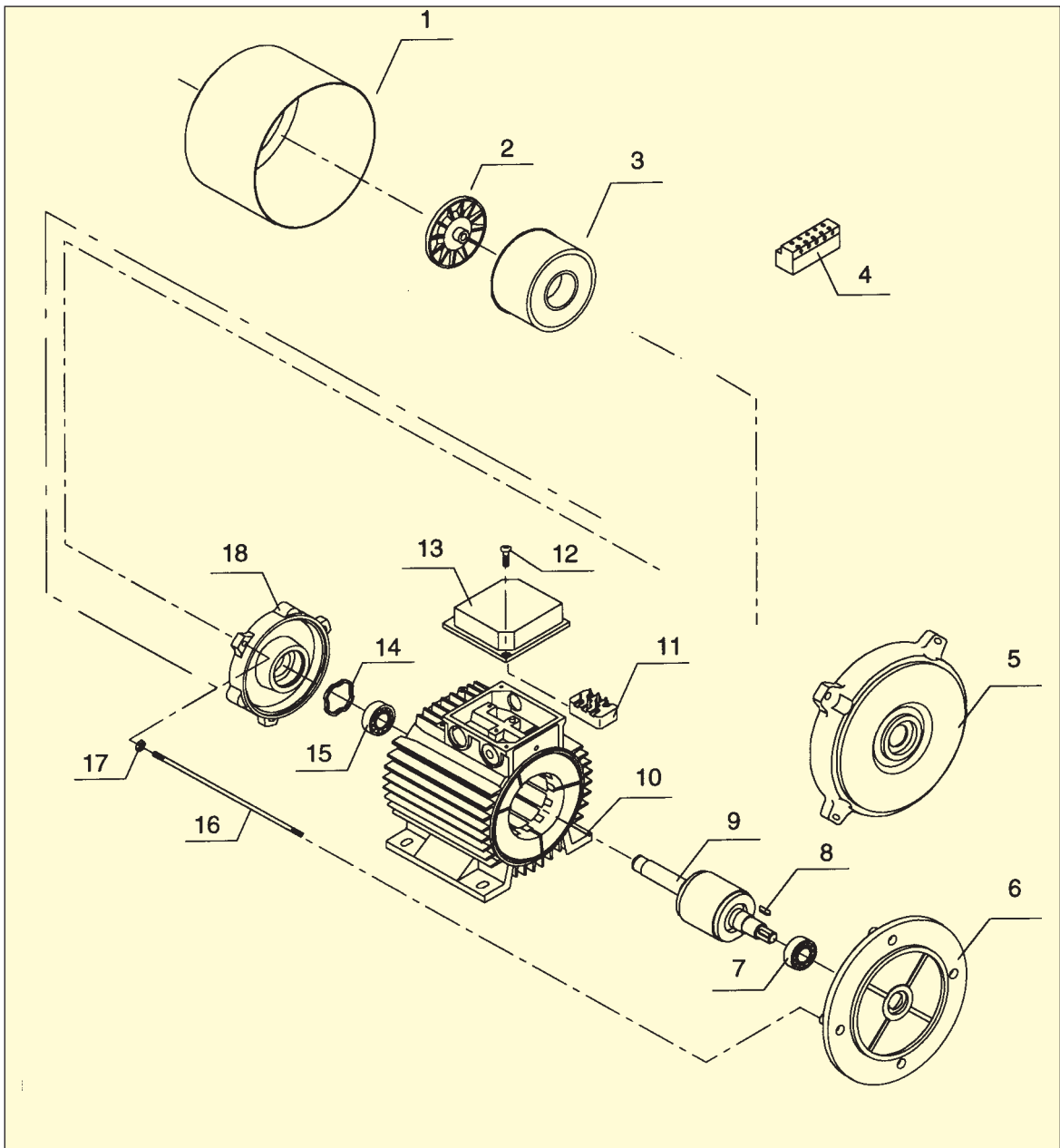
- Brake disk without axial movement of the shaft
- Operation of the brake within very low values of noise and amperage
- Compact dimensions
- DC brake as standard

Possible product configurations

- | | |
|---------------------------------------|--|
| - Motors with feet (B3) | - H class insulation |
| - Motors with feet and flange | - IP protection higher than series |
| - Motors with flange B5 | - Special painting |
| - Double shafts | - Thermal protections |
| - Special shafts | - Anti condense resistors |
| - Motors B3 with lateral terminal box | - R or S type equilibration of the rotor |
| - Custom motors | - Motors with encoder |
| - Special windings | - Lateral brake hand release |
| - Auxiliary fan | - Version with encoder |

For further information please contact Coel

FM-Spare parts



- | | |
|---------------------|----------------------------------|
| 1 Fan cover | 10 Motor case with winded stator |
| 2 Fan | 11 Terminal board |
| 3 Brake group | 12 Terminal board cover nuts |
| 4 Rectifier | 13 Terminal board cover |
| 5 B3 shield | 14 Compensation ring |
| 6 B5 flange | 15 Back side bearing |
| 7 Front bearing | 16 Drawrods |
| 8 Key | 17 Drawrod nuts |
| 9 Rotor shaft group | 18 Back side shield |

Three phase 2 - 4 - 6 - 8 poles

Type	kW	r.p.m.	In V.400	Cos. φ	n%	Ma/Mn	Ia/In	J	Kg	Braking Torque Nm.	W brake
FM225M2	45	2950	81	0,88	91,5	3,3	7,5	0,21	285	700	180
FM250M2	55	2950	95	0,9	92,5	3,3	7	0,34	360	700	180
FM280S2	75	2950	129	0,9	93,5	2,2	6,8	0,62	530	700	180
FM280M2	90	2960	155	0,89	94	2,4	7,5	0,72	570	700	180
FM315S2	110	2950	186	0,91	94	2,5	7	1,2	760	1600	325
FM315M2	132	2960	224	0,9	94,5	2,5	7,5	1,35	810	1600	325
FM315MA2	160	2975	280	0,88	94,5	3	8	2,1	1000	1600	325
FM315MB2	200	2980	335	0,9	95,5	3	8,5	2,55	1120	1600	325
FM225S4	37	1465	70	0,84	91	3,8	7	0,35	280	700	180
FM225M4	45	1465	83	0,85	92	3,8	7	0,42	315	700	180
FM250M4	55	1470	102	0,85	92	3,3	7	0,64	370	700	180
FM280S4	75	1475	135	0,86	93,5	2,4	7	1,2	550	700	180
FM280M4	90	1475	162	0,86	93,5	2,4	7	1,35	590	700	180
FM315S4	110	1480	196	0,86	94	2,8	8	2,35	790	1600	325
FM315M4	132	1480	230	0,88	94	2,8	8	2,7	860	1600	325
FM315MA4	160	1480	275	0,89	94,5	2,3	6,8	3,6	980	1600	325
FM315MB4	200	1480	345	0,88	94,5	2,6	7,5	4,4	1100	1600	325
FM225S6	26	970	50	0,84	89	3,3	6,3	0,47	260	700	180
FM225M6	30	970	56	0,86	90	3,5	7	0,54	280	700	180
FM250M6	37	975	67	0,87	91	3,5	7	1	360	700	180
FM280S6	45	980	82	0,87	91,5	2,8	6,5	1,8	540	700	180
FM280M6	55	980	98	0,88	92	3	7	2,05	580	700	180
FM315S6	75	985	132	0,88	93	3,5	8,5	3,6	780	1600	325
FM315M6	90	985	157	0,88	94	3,3	7,5	4,1	850	1600	325
FM315MA6	110	985	199	0,86	93	3,5	8	5,5	970	1600	325
FM315MB6	132	985	230	0,88	94	3,5	8,5	6,7	1090	1600	325
FM225S8	18,5	730	39,5	0,76	89	3,3	5,5	0,47	260	700	180
FM225M8	22	730	47	0,76	89	3	5,3	0,54	280	700	180
FM250M8	30	730	62	0,78	90	3,5	6	1	360	700	180
FM280S8	37	730	74	0,79	91	2,6	5,8	1,8	540	700	180
FM280M8	45	730	90	0,79	91,5	2,8	6	2,05	580	700	180
FM315S8	55	735	108	0,8	92	2,8	6	3,6	780	1600	325
FM315M8	75	735	149	0,79	92	2,8	6,3	4,1	850	1600	325
FM315MA8	90	735	181	0,78	92	2,8	6,3	5,5	970	1600	325
FM315MB8	110	735	223	0,77	92,5	3	6,8	6,7	1090	1600	325

For dual speed motors or special powers or windings, please contact Coel

